

CS Department Network Administration

Randolph Langley

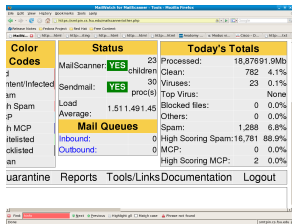
Department of Computer Science
Florida State University

August 19, 2009 / CS Faculty Workshop



What user services do we provide?

- Email Services
- Web Services
- File Services
- Programming Environments (Linux and Solaris)
- General Shell Access
- Database Services
- Subversion and CVS Services
- Printing Services
- Windows Terminal Services
- Desktop Support



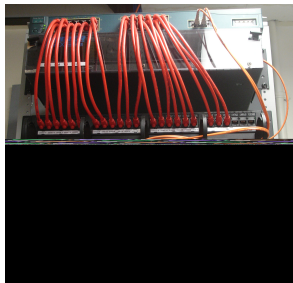
Color Codes	Status	Today's Totals
MailScanner	YES	23
Children		Processed: 18,876 91.9Mb
Sendmail	YES	Clean: 782 4.1%
Viruses		23 0.1%
Top Virus:		None
Blocked files:		0 0.0%
Others:		0 0.0%
Spam:		1,288 6.8%
High Scoring Spam:		16,781 88.9%
MCP:		0 0.0%
High Scoring MCP:		2 0.0%

Mail Queues	Inbound:	Outbound:
	0	0

quarantine Reports Tools/Links Documentation Logout



What infrastructure services do we provide?



- DHCP
- Backup
- Research Backup
- Security Cameras
- Domain Controllers
- Spam Filtering
- Wireless
- Log server



Many boxes, different environments



- 40+ servers
- Many routers and switches
- Lots of desktops
- Technology-enabled classrooms



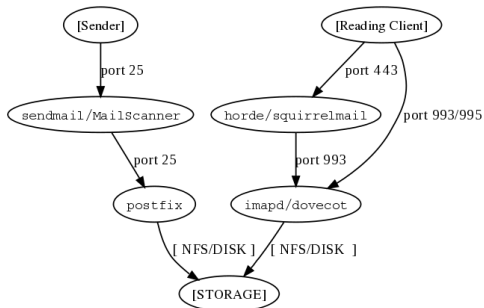
People



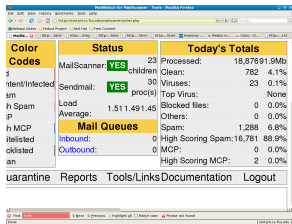
- 1 Permanent A&P
- Several OPS graduate and undergraduate students who are serve as sysadmins and as webmaster
- Numerous Lab monitors



Overall Structure of Email Services



Upgrades to Email



Color Codes	Status	Today's Totals
MailScanner: YES	23 children	Processed: 18,87691.9Mb
Sendmail: YES	30 proc(s)	Clean: 782 4.1%
Average: 1.511.491.45		Viruses: 23 0.1%
		Top Virus: None
		Blocked files: 0 0.0%
		Others: 0 0.0%
		Spam: 1,288 6.8%
		High Scoring Spam: 16,781 88.9%
		MCP: 0 0.0%
		High Scoring MCP: 2 0.0%

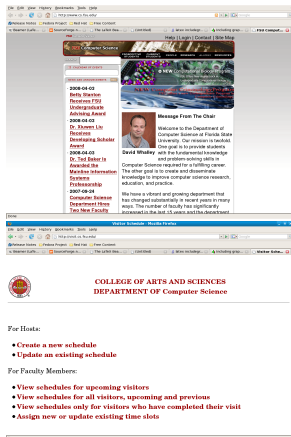
Mail Queues
Inbound: 0
Outbound: 0

uarantine Reports Tools/Links Documentation Logout

- sendmail/MailScanner
- sendmail uses RBLs, GreetPause, and denies hosts that have no reverse-lookup record (no SPF)
- MailScanner calls SpamAssassin
- SpamAssassin uses DCC, Razor, and RBLs



Our web servers



- webserv.cs.fsu.edu, supporting many, many virtual hosts:
acm.cs.fsu.edu, msdnnaa.cs.fsu.edu, www.cavis.fsu.edu, cybersec.cs.fsu.edu, saittest.cs.fsu.edu, fci.cs.fsu.edu, service.cs.fsu.edu, www.lens.cs.fsu.edu, fsvision.fsu.edu, system.cs.fsu.edu, www.sait.fsu.edu, lit.cs.fsu.edu, webmail.cs.fsu.edu, www.aces.cs.fsu.edu
- webserv2.cs.fsu.edu, student pages
- visitwww.cs.fsu.edu



Our fileservices



- NFS is widely used throughout the department
- I would like to see us move toward user-directed FUSE mounting using sshfs rather than system administrators configuring NFS on an *ad hoc* basis
- Not only is the maintenance much simpler for everyone, it also offers users far more flexibility in what filesystems they can have mounted



Our fileservices



- sshfs syntax is very simple:

```
sshfs
```

```
langley@diablo:~/home/faculty/langley
```

```
mounts/diablo
```



Our database services



- We offer MySQL on dbserve.cs.fsu.edu
- We probably overuse MySQL when such lightweight databases such as SQLite would probably be more than sufficient, and arguably more secure – there are no separate credentials to worry about when accessing SQLite.



Subversion and CVS services



- We have a dedicated Subversion and CVS server,
- Please contact the systems group if you want to use it.
- We have CVS pserver set up on it, including an stunnel setup to make it somewhat more secure.



Windows Terminal Services



- You can use `csterm1` for Windows Terminal Services
- You can also use this from Linux with `rdesktop`
- This can save you from dual-booting or having two desktops.
- (Of course, you can also use virtualization to also save on desktop space; lately, I have been very pleased with VirtualBox (available for free at www.virtualbox.org))



Bits and pieces in the background



- Perhaps the surprising thing about “infrastructure” is that we do provide some security cameras, mainly for server rooms and labs, although we also have a camera in 208 MCH since the room is divided and we are also in and out a good bit.
- We have started using Zoneminder recently for our two IP cameras
- We also have added quite a bit of performance monitoring using Cacti



Backups



- Research backup is available on `rsbksrv`.
- You will have to use `ssh` key-pair to access it; I recommend that you backup with `rsync`.
- Full directions for generating keys are on my home page – summary: you run `ssh-keygen` to generate a key-pair.
- Once you have the key-pair, email me your public key (not your private one! ;-)
- `rsync` is easy and efficient to use



Summary



- We are in 208 MCH, across the parking lot from the Love Building
- Our network and computing environment is continually changing, so expect more changes

